

Product Guide

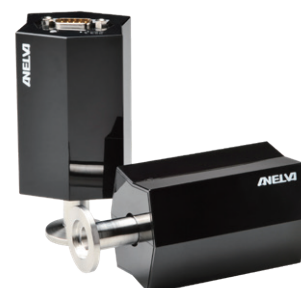
Vacuum Component

Capacitance Gauge

M-342DG

M-342DG gauge is using a small silicon MEMS chip in the pressure sensor part, highly accurate and stable with minimal impact from the external environment temperature correction type diaphragm vacuum gauge that can measure absolute pressure.

- Excellent zero-point shift durability
- Low-temperature dependence
- Excellent vibration resistance



Cold Cathode Pirani Gauge Cold Cathode Gauge

M-361CP/M-370CG

M-361CP is a full range gauge capable of seamless pressure measurement from atmospheric pressure to ultra-high vacuum.

Consisting of newly developed pirani gauge which can detect atmospheric pressure and long-life cold cathode gauge equipped with excellent electric discharge assistance function.

M-370CG is a cold cathode gauge using for measurement from high vacuum to ultra-high vacuum.

- Adopting a unique optical trigger mechanism to reduce measurement stops
- Compatible with a wide variety of processes
- Saving cost as a double role (M-361CP)
- Maintainable and low running cost
- Maintenance is part replacement only



Pirani Gauge

M-350PG/M-351PG

M-350PG/M-351PG are capable of measurement from atmospheric pressure to 10^{-3} Pa level.

These gauges are lightweight, compact, and low-cost, suitable for a wide variety of applications.

- Lightweight, compact, and low cost
- Two types of filaments
(M-350 : Tungsten, M-351 : Nickel)
- Sensor can be replaced



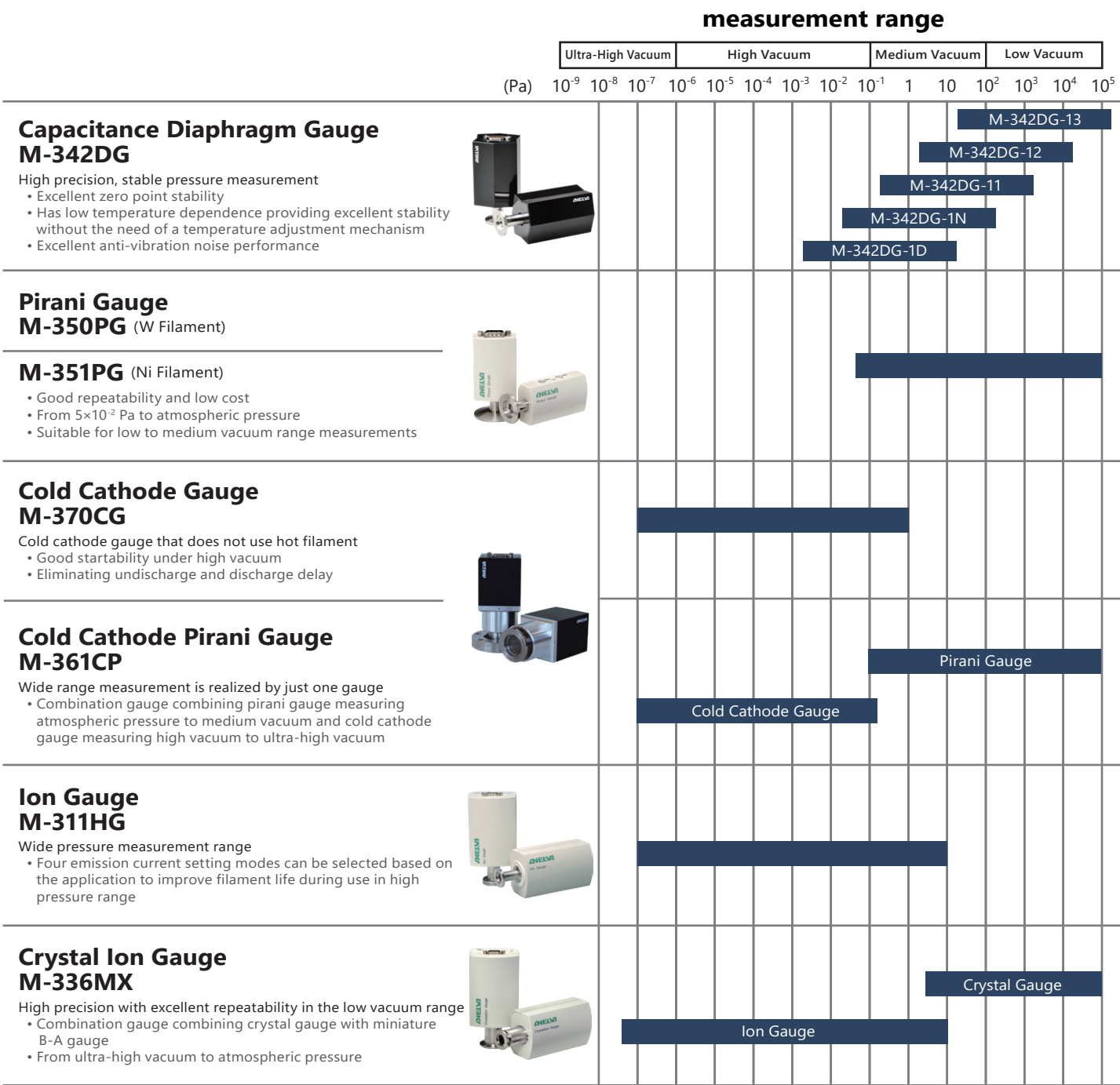
Canon ANELVA provides vacuum solution

Vacuum Gauges

Transducer Vacuum Gauges

Compact wire-saving, CE marking / RoHS compliant environment-friendly products.

These Transducer type vacuum gauges are capable of handling a wide range from atmospheric pressure to 10^{-8} Pa.



Display (1ch type / 3ch type) M-601GC / 603GC

1. Gauge auto recognition
2. Large digital LCD
3. Standard equipped with RS232C interface
4. Excellent operability
5. Capable of simultaneous display (3ch)
6. Easy to view 3 type display (3ch)
 - Digital display
 - Trend graph (up to 18H)
 - Analog meter



M-601GC (1ch type)



M-603GC (3ch type)

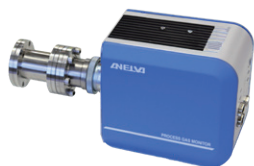
in response to the customer needs.

Analytical Instruments

Quadrupole Mass Spectrometers

M-080QA-HPM Process Gas Monitor

M-080QA-HPM Process Gas Monitor is capable of operating under pressure less than 2.0 Pa at sputtering process. This monitor is capable of measurement mass spectrometry under ultra-high vacuum and gas composition during the process by one unit.

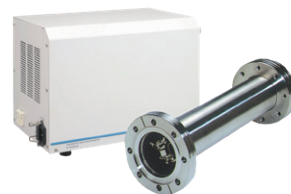


M-070QA-TDF、M-101QA-TDF、 M-101/201QA-TDM

This is quadrupole type mass spectrometer with low gas emission. This product can be used for a wide variety of applications such as residual gas analysis in vacuum equipment, process gas monitoring and thermal desorption gas analysis.

M-401QA-MG/U

Quadrupole mass spectrometer capable of measuring weight up to 410 amu. This is suited for thermal desorption gas analysis and gas analysis for R&D.



Leak Detectors

Leak Detectors

M-212/M-222/M-232 Series

Leak detector series have been conceptually developed with emphasis on compactness, lightness and portability. The series detects leak in a high repeatability and quick response. It is used for the leak test of various parts, electronic parts, computer parts, automobile parts, parts for refrigerator or heat exchanger.



Vacuum Pumps

Cryo Pump

POWER^{ECO} Series

POWER^{ECO} series realizes high-speed regeneration with a self-heating function. With proven cryo panel technology and streamlined refrigeration systems, Provides stable pumping performance and capacity. Advanced control systems reduce power consumption and contribute to improvement of running costs.



Ion Pump

Ultra-High Vacuum Pump

Ion pump works in oil-free and suitable for ultra-high vacuum.



P-500 Series

P-500 series are controller for an ion pump or a noble pump. This controller is ideal for automation equipment and remote control equipment.



X-ray Source

Microfocus X-ray Source

G-311VH-D/DL,G-311VHDP/DPL

This is a microfocus X-ray source series specially for industrial X-ray non destructive inspection.
These X-ray sources realize high speed imaging with high resolution by stable X-ray beam.

G-511VL-D/DL,G-511VL-DP/DPL

This is a higher resolution X-ray source than our conventional equipment.
This is available for CT / offline analysis.



Standard Holder Type



Long Holder Type

Published on July 2025

Canon CANON ANELVA CORPORATION

URL : <https://anelva.canon/en/>



Equipment Business Headquarters

2-5-1 Kurigi, Asao-ku, Kawasaki-shi, Kanagawa 215-8550, Japan

Canon U.S.A., Inc.

3300 North First Street San Jose, CA 95134 U.S.A.

Canon Europa N.V.

Bovenkerkerweg 59, 1185 XB Amstelveen, The Netherlands

Canon Semiconductor Engineering Korea Inc.

49,Dosijiwon 1-gil, Godeok-myeon, Pyeongtaek-si, Gyeonggi-do,
18021, Republic of Korea

Canon Semiconductor Equipment Taiwan, Inc.

9F-1, No.25, Pu-Ding Road, Hsinchu, 300047, Taiwan

Canon Singapore Pte. Ltd.

1 Fusionopolis place, #14-10 Galaxis Singapore138522

Canon Optical Industrial Equipment (Shanghai) Inc.

3-4F, South Wing, Building 5, Innovation Galaxy,
No.210 Wenshui Rd, Jing'an District, Shanghai 200072, China

marketing@mail.canon

TEL : +1-408-468-2000

FAX : +1-408-468-2343

TEL : +31-20-545-8545

FAX : +31-20-545-8222

TEL : +82-31-616-2020

FAX : +82-31-616-2023

TEL : +886-3-668-6600

FAX : +886-3-668-6969

TEL : +65-6799-8888

FAX : +65-6271-4226

TEL : +86-21-2316-3200

FAX : +86-21-2316-3222

※ Notes on export, transfer and disposal

When exporting a product listed in this catalog outside Japan, please inform our sales division in advance because decisions must be made based on the terms of the Foreign Exchange and Foreign Trade Act. Also note the transfer and disposal destination when transferring or disposing domestically.

※ The specifications published in this catalog are subject to change without prior notice.