

Attn.: Customer

CANON ANELVA CORPORATION
Quality Management Div.

Specifications Change Notice of Air Manifold by CKD Corporation

Thank you for using CANON ANELVA products.

This is to announce the specification change of Air Manifold by CKD Corporation used in our system.

We will continually improve the product quality and reliability to ensure customer satisfaction.

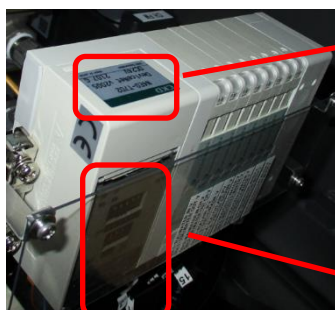
NOTE

Device Net-adaptive communication unit

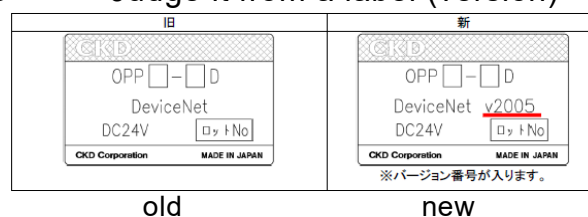
No.	Name	Part No.
1	CORE,WATER MANIFOLD UNIT PLUS	9014-24434B
2	CORE,WATER MANIFOLD UNIT PLUS HEAT	9014-55011B
3	WATER LINE,MANIFOLD UNIT,SOURCE	9014-45618B
4	WATER LINE,MANIFOLD UNIT,RETURN	9014-48682B
5	WATER LINE,MANIFOLD UNIT,SOURCE(6)	9014-61224B
6	WATER LINE.,MANIFOLD UNIT,RETURN(6)	9014-61258B
7	WATER LINE,MANIFOLD UNIT,SOURCE	9015-00971B
8	WATER LINE,MANIFOLD UNIT,RETURN	9015-01008B
9	WATER LINE,MANIFOLD UNIT,S&R (3)	9015-29941B

※The old and new types vary in setting of the DIP switch. Please hear the setting

◆Distinction of old and new types



• Judge it from a label (version)



• Judge it from DIP switch

From the left 1,2,4



old

From the left 32,16,8



new

Feel free to inquire of our sales or service representatives for details.

<https://anelva.canon/english/contacts/>